






845A Bourke Street REDFERN NSW

3  2  1 

This stylish inner-city terrace has been reimagined into an open-plan alfresco home that blends modern comfort with timeless period features. Set on a 133.8 sqm block of land this brick house offers expansive interiors, flowing living spaces and outdoor areas ideal for entertaining. Situated in the lively heart of East Redfern, just moments to supermarket, coffee shops, restaurants and Moore Park Supa Centre, Allianz Stadium and Oxford Street.

Discover the perfect blend of comfort style and maintenance free living in this recently painted beautifully presented three-storey brick terrace. This home is designed to offer both luxury and practicality, with spacious living areas that seamlessly flow into one another.

Ground Floor:

Land Size : 133.8 sqm

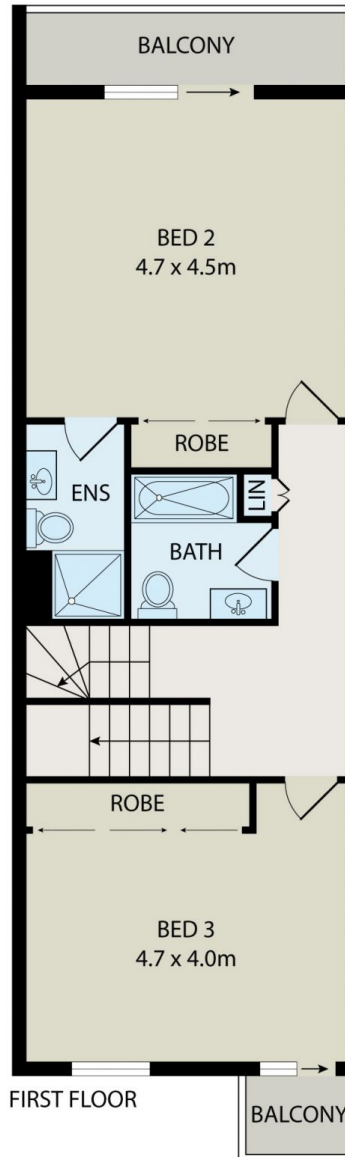
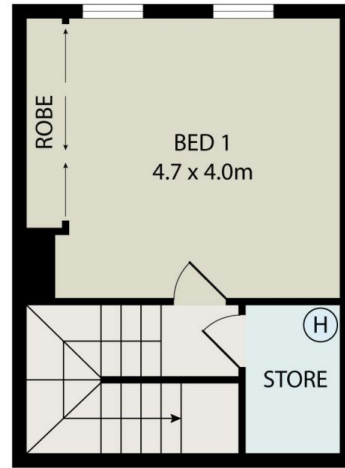
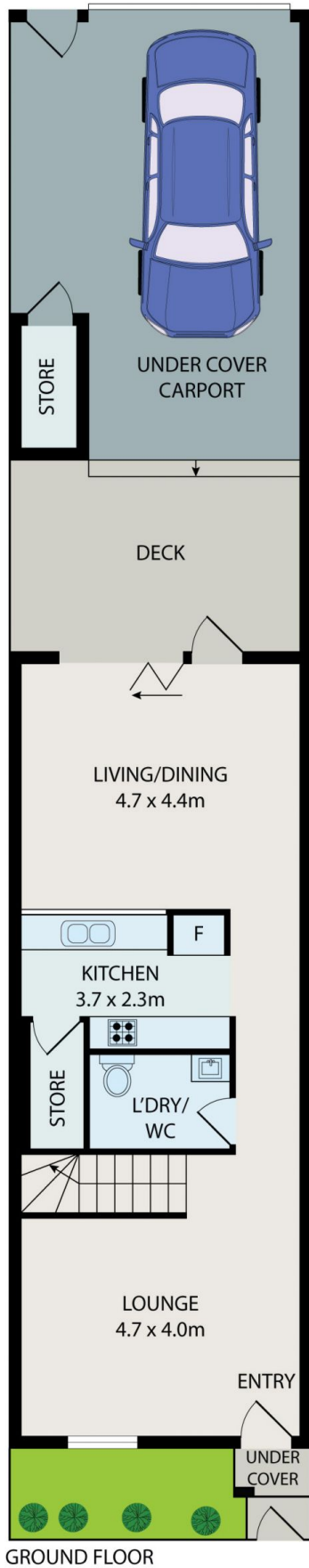
View : <https://www.ronisrealestate.com.au/sale/nsw/eastern-suburbs/redfern/residential/house/8316144>



George Ronis
0415 154 486



Olha Krasinska
0499 988 422



All information contained herein is gathered from all sources we believe to be reliable. However we cannot guarantee its accuracy and interested parties should rely on their own enquiries.



845A Bourke Street, Redfern