



71 Woodlands Drive GLENMORE PARK NSW

5 🛏 1 🚿 4 🚗

Occupying a substantial 578sqm corner block in the highly sought-after heart of Glenmore Park this spacious five-bedroom residence presents an exceptional opportunity for families, investors and those seeking a home that combines comfort with everyday convenience and an added income.

Thoughtfully designed to accommodate modern family living, the home offers generous interiors, practical features, and a highly desirable location close to essential amenities.

Property Features:

- Five well-proportioned bedrooms, with built-in wardrobes
- Custom-built contemporary kitchen featuring gas cooktop and quality stainless-steel appliances
- Two spacious living areas providing flexibility for both

Price : Contact Agent
Land Size : 578 sqm
View : <https://www.ronisrealestate.com.au/sale/nsw/western-sydney/glenmore-park/residential/house/8638513>

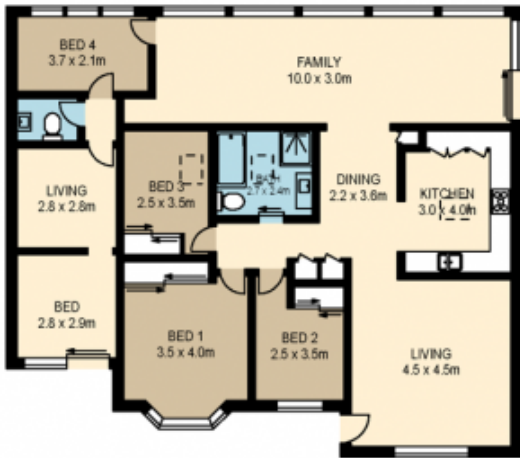


George Ronis
0415 154 486



Olha Krasinska
0499 988 422

71 WOODLANDS DRIVE, GLENMORE PARK



All measurements, dimensions, areas, and layouts shown in this floor plan are approximate only and are provided for illustrative and marketing purposes. They are not to scale and may differ from the actual structure. No warranty or representation is made as to the accuracy, completeness or suitability of the information. This floor plan does not form part of any contract or offer. Asset Photographers Pty Ltd and the selling agent make no guarantees and accept no liability for any reliance placed on the floor plan by any party. Interested buyers must make their own enquiries, carry out inspections, and obtain independent advice to verify the information. Use of this plan is at your own risk.

